

**Motic®**

MORE THAN MICROSCOPY



**PANTHERA E**

# PANTHERA E

Motic's microscope series Panthera E introduces a new quality and performance level to basic routine and scientific work. This microscope combines distinct improvements in image quality with new illumination features. The Panthera E is equipped with the redesigned SC Plan Achromatic Infinity optics. These objectives combined with N-WF widefield eyepieces with a 20mm Field of View deliver

unmatched image quality and definition. The Panthera E stand features a reversed 4-fold nosepiece and is equipped with a rackless stage, whereas the illumination is provided by an LED light source in a Fixed Koehler setup. Enhanced objective performance, long-lasting illumination, and a user-friendly design - the Panthera E is perfectly tailored for modern education and small lab environments.



360°  
rotatable head  
(storage saving  
space)

Plan SC objectives

Quadruple  
nosepiece

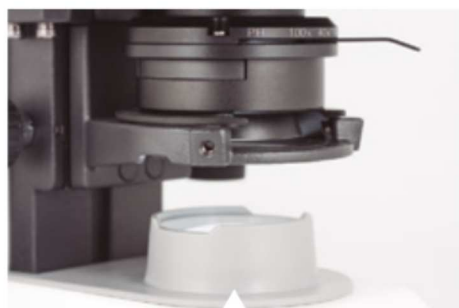
Rackless stage

Integrated USB  
for camera power  
& USB  
for battery pack



#### ROBUST FUNCTIONALITY FOR DEMANDING ENVIRONMENTS

Motic's Panthera E features a rackless stage with a standard slide holder, as well as an upper limit stop, eliminating the risk of breaking the glass slide while focusing. The minimum increment of 2 microns in z-movement facilitates smooth focusing of samples under high magnifications. The standard eyepiece tubes can be adjusted to accommodate different physiques. In addition, all tubes are rotatable, a helpful space saving feature for storage.



#### NEW SC OBJECTIVES AND EYEPIECES

For Panthera E, Motic redesigned the CCIS® Infinity optics to create a series of new Plan SC Achromatic objectives. These lenses present a flat image for a 20mm Field of View with optimal color fidelity and contrast. The new 100X/0.8 "Dry objective" is especially favorable in environments where the time-consuming immersion procedure on a "normal" 100X objective is considered too difficult and complicated.



#### EFFICIENT LED ILLUMINATION SETUP

The Panthera E is equipped with a low consumption LED light source in a Fixed Koehler setup without field diaphragm. The light intensity indicator displays the light intensity as a sequence of LEDs around the revolving nosepiece. With a USB port in the stand, Panthera E can connect to a power bank and function independently from the main power supply. The standard Abbe condenser with NA 0.9/1.25 with aperture diaphragm and slider slot is ready to carry sliders for Phase contrast and Darkfield.

Our **MOTICAM** range offers the choice between several imaging options. Besides the standard USB cameras, we offer solutions like the Moticam Full HD cameras, tablet solutions, and Wi-Fi cameras working with our free "MotiConnect" App.

Know more at [www.moticamseries.com](http://www.moticamseries.com)



#### ADAPTABLE TO SAMPLE CHARACTERISTICS

If desired, Panthera E can be upgraded with accessories for different contrast methods: a Phase contrast slider solution for unstained samples from botany, zoology, and medicine, a Darkfield slider, and a POL contrast option for birefringent samples.

## SPECIFICATIONS

### PANTHERA E



|                                   |   |
|-----------------------------------|---|
| Optical system                    | Colour Corrected Infinity Optical System (CCIS®)  |
| Observation system                | Binocular/Trinocular Siedentopf type 25° inclined, 360° rotatable (storage saving), 360° swivelling |
| Interpupillary distance (mm)      | 48-75mm   |
| Trinocular light split            | 50/50 fixed   |
| Eyepieces                         | N-WF10X/20  |
| Eyepieces diopter adjustment      | +/- 5 dpt   |
| Nosepiece                         | Reversed quadruple  |
| Objectives Plan SC                | 4X/0.1 (WD 15.5mm), 10X/0.25 (WD 17.4mm), 40X/0.65/S (WD 0.6mm), 100X/1.25/S-Oil (WD 0.14mm)        |
| Objective mounting thread         | W 4/5" x 1/36" (RMS standard)   |
| Stage                             | Rackless stage  |
| Stage size (mm)                   | 140x135   |
| Travel range (mm)                 | 75X40   |
| Upper limit stop                  | Preset; adjustable  |
| Condenser                         | N.A. 0.90 / 1.25 Abbe condenser with slider slot  |
| Focus mechanism                   | Coaxial; tension adjustment   |
| Minimum fine focus precision (µm) | 2   |
| Z-axis movement (mm)              | 25  |
| Illumination type                 | 0.5W LED, Fixed Koehler   |
| Illumination features             | Nosepiece LED light intensity indicator   |
| Connectivity                      | USB for external camera power & USB for battery pack  |
| Power supply                      | 110-240V (CE)   |
| Dimensions (mm)                   | 282x210x395 (Binocular), 282x210x396 (Trinocular)   |
| <b>Contrast techniques</b>        |   |
| Brightfield                       | Yes   |
| Phase contrast                    | Slider  |
| Simple Polarization               | Yes   |
| Simple Darkfield                  | Slider  |
| LED Fluorescence                  | Yes - Intermediate module   |

DISCOVER THE COMPLETE PANTHERA SERIES AT  
[www.moticpanthera.com](http://www.moticpanthera.com)

[www.moticeurope.com](http://www.moticeurope.com)

#### WETZLAR, GERMANY

SALES OFFICE

Christian-Kremp-Straße 11, 35578 Wetzlar, Germany

T. +49 6441 21001 0 | Fax: 49-6441-210 0122

#### BARCELONA, SPAIN

SALES OFFICE & EUROPEAN DISTRIBUTION CENTRE

C. Les Corts 12, Pol. Ind. Les Corts 08349 Cabrera de Mar, Barcelona, Spain

T. +34 93 756 62 86 | Fax: 34 93 756 62 87